

Please write clearly in block capitals.

Centre number

--	--	--	--	--

Candidate number

--	--	--	--

Surname

---

Forename(s)

---

Candidate signature

---

I declare this is my own work.

# Year 10 CHEMISTRY

# H

## Higher Tier Paper 1

Time allowed: 1 hour 45 minutes

### Materials

For this paper you must have:

- a ruler
- a scientific calculator
- the periodic table (enclosed).

### Instructions

- Use black ink or black ball-point pen.
- Pencil should only be used for drawing.
- Fill in the boxes at the top of this page.
- Answer **all** questions in the spaces provided. Do not write outside the box around each page or on blank pages.
- If you need extra space for your answer(s), use the lined pages at the end of this book. Write the question number against your answer(s).
- Do all rough work in this book. Cross through any work you do not want to be marked.
- In all calculations, show clearly how you work out your answer.

### Information

- The maximum mark for this paper is 100.
- The marks for questions are shown in brackets.
- You are expected to use a calculator where appropriate.
- You are reminded of the need for good English and clear presentation in your answers.

For Examiner's Use	
Question	Mark
1	
2	
3	
4	
5	
6	
7	
8	
9	
10	
<b>TOTAL</b>	

0 1

Discoveries in chemistry led to a better understanding of atomic structure.

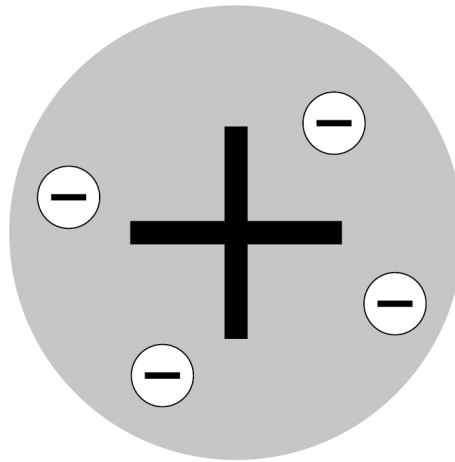
0 1 . 1

Atoms were originally thought to be tiny spheres that could not be divided.

The plum pudding model of the atom was then developed.

**Figure 1** represents the plum pudding model of the atom.

**Figure 1**



Describe the plum pudding model of the atom.

**[2 marks]**

---

---

---

---

0 1 . 2

Atoms contain electrons, neutrons and protons.

Write these three particles in order of their discovery.

**[1 mark]**

Earliest \_\_\_\_\_

\_\_\_\_\_

Latest \_\_\_\_\_

Very few atoms of the element tennessine (Ts) have ever been identified.

The atomic number of tennessine is 117

**0 1 . 3** Predict the number of outer shell electrons in an atom of tennessine.

Give **one** reason for your answer.

Use the periodic table.

**[2 marks]**

Number of outer shell electrons \_\_\_\_\_

Reason \_\_\_\_\_

\_\_\_\_\_

**0 1 . 4** Tennessine was first identified by a small group of scientists in 2010.

Suggest **one** reason why tennessine was **not** accepted as a new element by other scientists until 2015.

**[1 mark]**

\_\_\_\_\_

\_\_\_\_\_

**Question 1 continues on the next page**

**Turn over ►**

0 1 . 5

The discovery of isotopes explained why some relative atomic masses are not whole numbers.

Element **R** has two isotopes.

**Table 1** shows the mass numbers and percentage abundances of the isotopes of element **R**.

**Table 1**

Mass number	Percentage abundance (%)
6	19.2
7	80.8

Calculate the relative atomic mass ( $A_r$ ) of element **R**.

Give your answer to 1 decimal place.

[3 marks]

---

---

---

---

---

Relative atomic mass (1 decimal place) = \_\_\_\_\_

**Turn over for the next question**

*Do not write  
outside the  
box*

**DO NOT WRITE ON THIS PAGE  
ANSWER IN THE SPACES PROVIDED**

**Turn over ►**

0 2

This question is about temperature changes.

A student investigated the change in temperature of a solution when different masses of ammonium nitrate were dissolved in water.

This is the method used.

1. Measure 200 cm<sup>3</sup> of water into a polystyrene cup.
2. Measure the temperature of the water.
3. Add 4.0 g of ammonium nitrate to the water.
4. Stir the solution until all the ammonium nitrate has dissolved.
5. Measure the lowest temperature reached by the solution.
6. Repeat steps 1 to 5 with different masses of ammonium nitrate.

0 2 . 1

Give the independent variable and the dependent variable in the investigation.

**[2 marks]**

Independent variable \_\_\_\_\_

Dependent variable \_\_\_\_\_

**Table 2** shows the results.

**Table 2**

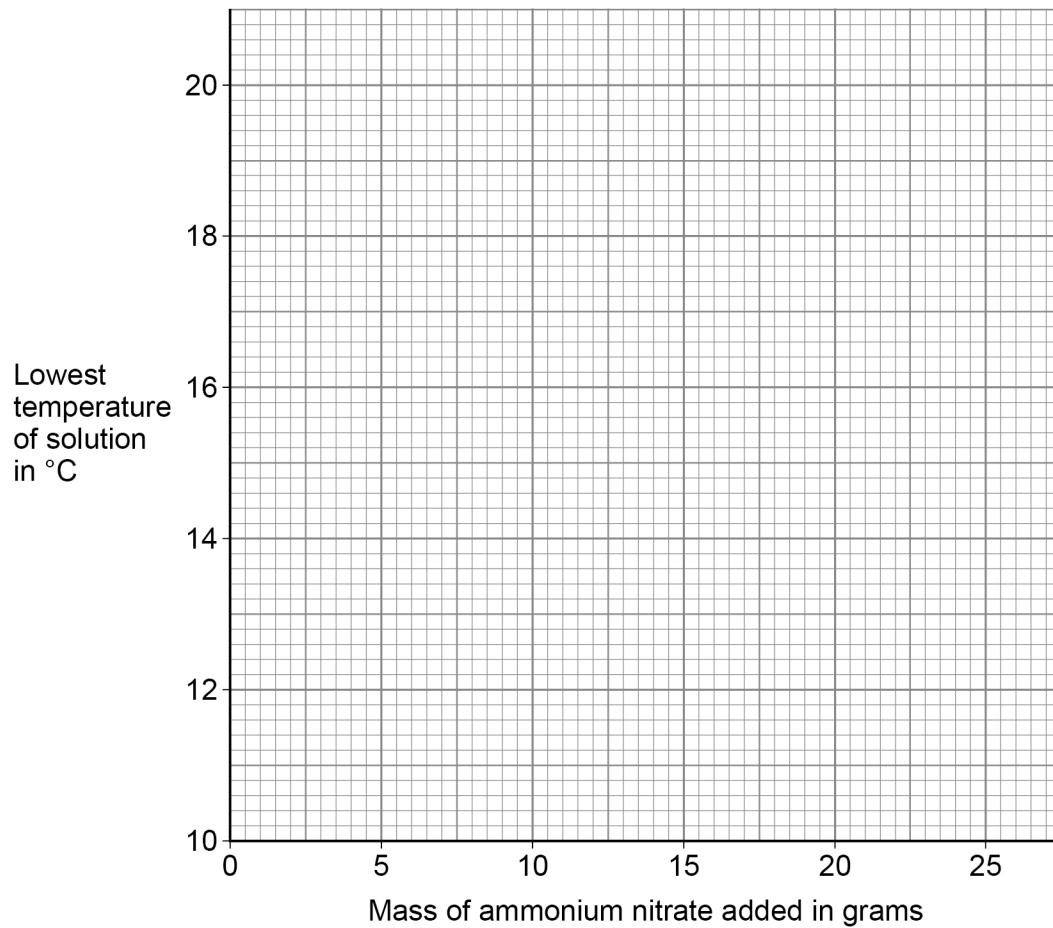
Mass of ammonium nitrate added in grams	Lowest temperature of solution in °C
4.0	18.2
8.0	16.2
12.0	15.2
16.0	13.6
20.0	12.4
24.0	10.6

**0 2 . 2** Plot the data from **Table 2** on **Figure 2**.

Draw a line of best fit.

**[3 marks]**

**Figure 2**



**0 2 . 3** Determine the initial temperature of the water.

You should extend your line of best fit on **Figure 2**.

**[2 marks]**

Initial temperature of the water = \_\_\_\_\_ °C

**0 2 . 4** How do the results show that dissolving ammonium nitrate in water is endothermic?

**[1 mark]**

---



---

Turn over ►

The student repeated the experiment three more times.

**Table 3** shows the results for 8.0 g of ammonium nitrate.

**Table 3**

	Trial 1	Trial 2	Trial 3	Trial 4	Mean
<b>Lowest temperature of solution in °C</b>	16.2	16.6	16.8	16.4	16.5

0 2 . 5

The student recorded the mean lowest temperature of the solution for 8.0 g of ammonium nitrate as  $16.5 \pm 0.3$  °C.

Explain why the student included  $\pm 0.3$  °C after the mean lowest temperature.

**[2 marks]**

---



---



---



---

0 2 . 6

What type of error is shown by the results in **Table 3**?

**[1 mark]**

Tick (✓) **one** box.

Random error

Systematic error

Zero error

Do not write  
outside the  
box



0 4

This question is about hydrogen and compounds of hydrogen.

**Figure 3** shows the displayed formulae for the reaction between hydrogen and chlorine.

**Figure 3**



**Table 4** shows the bond energies.

**Table 4**

Bond	H — H	Cl — Cl	H — Cl
Bond energy in kJ/mol	436	346	432

0 4 . 1

Which expression shows how to calculate the overall energy change for the reaction in **Figure 3**?

Use **Table 4**.

[1 mark]

Tick (✓) **one** box.

436 + 346 + 432 kJ/mol

436 + 346 + (2 × 432) kJ/mol

436 + 346 - 432 kJ/mol

436 + 346 - (2 × 432) kJ/mol

The reaction between hydrogen and chlorine is exothermic.

**0 4 . 2** Explain why this reaction releases energy to the surroundings.

**[2 marks]**

---

---

---

---

**0 4 . 3** **Figure 4** shows part of a reaction profile for the reaction between hydrogen and chlorine.

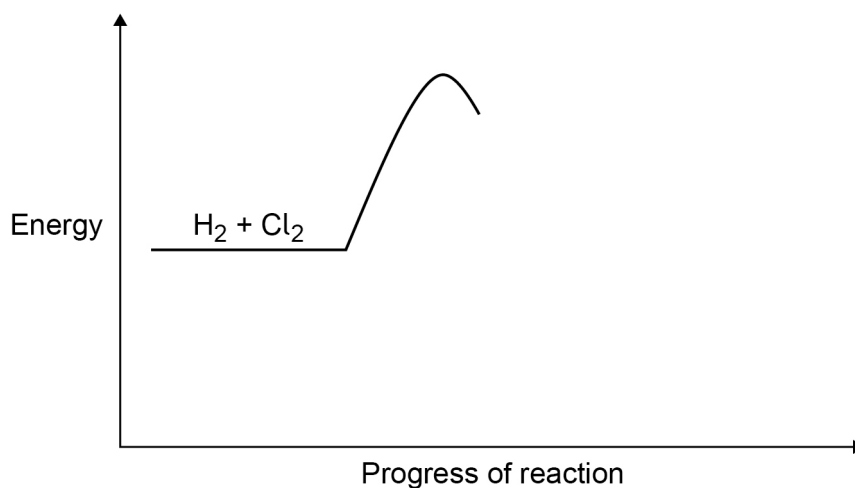
Complete the reaction profile in **Figure 4**.

You should:

- label the activation energy
- label the overall energy change.

**[3 marks]**

**Figure 4**



**Question 4 continues on the next page**

**Turn over ►**

**0 4 . 4** Draw a dot and cross diagram for a molecule of hydrogen chloride (HCl).

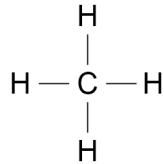
Show the outer shell electrons only.

**[2 marks]**

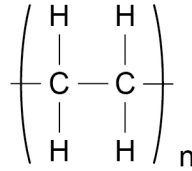
**0 4 . 5** Figure 5 represents molecules of methane and of poly(ethene).

**Figure 5**

Methane



Poly(ethene)



Methane is a gas at room temperature but poly(ethene) is a solid at room temperature.

Explain why methane and poly(ethene) exist in different states at room temperature.

**[4 marks]**

---



---



---



---



---



---



---



---



---



---

12

**Turn over for the next question**

**Turn over ►**

**0 5** This question is about acids and alkalis.

**0 5 . 1** Ethanoic acid is a weak acid.

What is meant by 'weak acid'?

Answer in terms of ionisation.

[1 mark]

---

---

**0 5 . 2** The concentration of an acid can be measured in mol/dm<sup>3</sup>.

Which combination of changes **increases** the concentration of an acid?

[1 mark]

Tick (✓) **one** box.

The mass of acid dissolved is halved and the volume of the solution is halved.

The mass of acid dissolved is halved and the volume of the solution is doubled.

The mass of acid dissolved is doubled and the volume of the solution is halved.

The mass of acid dissolved is doubled and the volume of the solution is doubled.

**0 5 . 3** The concentration of an acid can be determined by titration.

An indicator is added to an alkali in a flask.

Name an indicator that can be used in this titration.

Give the colour change of the indicator when acid from a burette is added to the alkali in the flask.

[2 marks]

Name of indicator \_\_\_\_\_

Colour change from \_\_\_\_\_ to \_\_\_\_\_

**0 5 . 4** Sodium carbonate dissolves in water to produce an alkaline solution.

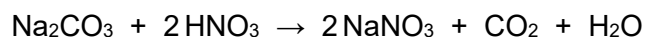
Give the formula of the ion that makes a solution alkaline.

**[1 mark]**

\_\_\_\_\_

**0 5 . 5** A student does a titration using sodium carbonate solution and nitric acid.

The equation for the reaction is:



25.0 cm<sup>3</sup> of 0.124 mol/dm<sup>3</sup> sodium carbonate solution is neutralised by 23.6 cm<sup>3</sup> of nitric acid.

Calculate the concentration of the nitric acid.

Give your answer to 3 significant figures.

You should calculate:

- the number of moles of sodium carbonate in 25.0 cm<sup>3</sup> of the solution
- the number of moles of nitric acid in 23.6 cm<sup>3</sup> of the nitric acid
- the concentration of the nitric acid in mol/dm<sup>3</sup>.

**[5 marks]**

\_\_\_\_\_

\_\_\_\_\_

\_\_\_\_\_

\_\_\_\_\_

\_\_\_\_\_

\_\_\_\_\_

\_\_\_\_\_

\_\_\_\_\_

\_\_\_\_\_

\_\_\_\_\_

Concentration (3 significant figures) = \_\_\_\_\_ mol/dm<sup>3</sup>

When hydrochloric acid dissolves in water, hydrogen ions ( $\text{H}^+$ ) and chloride ions ( $\text{Cl}^-$ ) are produced.

0 5 . 6

A solution of hydrochloric acid with pH 4.5 has a concentration of  $\text{H}^+$  ions of  $3.16 \times 10^{-5} \text{ mol/dm}^3$ .

What is the concentration of  $\text{H}^+$  ions in a solution of hydrochloric acid with pH 2.5?

[1 mark]

---

---

Concentration of  $\text{H}^+$  ions = \_\_\_\_\_  $\text{mol/dm}^3$

0 5 . 7

Which element has atoms that have the same electronic structure as the chloride ion?

Use the periodic table.

[1 mark]

---

**Turn over for the next question**

*Do not write  
outside the  
box*

**DO NOT WRITE ON THIS PAGE  
ANSWER IN THE SPACES PROVIDED**

**Turn over ►**

0 6

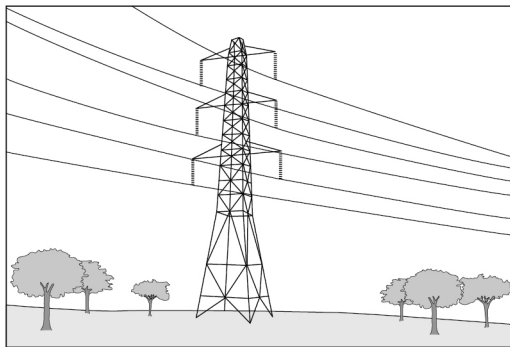
This question is about uses of metals in electrical wires.

Electrical wires can be made from:

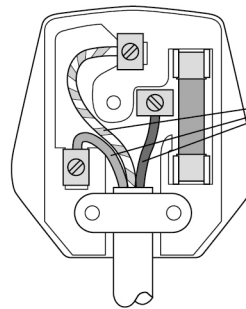
- aluminium
- copper
- silver.

**Figure 6** shows three uses of electrical wires.

**Figure 6**

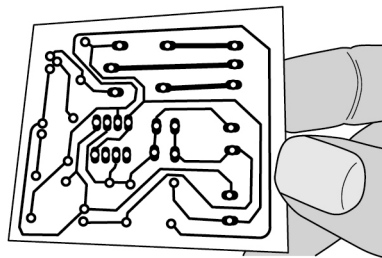


Overhead power cables



Electrical wires

Wiring in homes



Printed circuit boards

**Table 5** shows information about the metals.

The higher the value for electrical conductivity, the better the metal is at conducting electricity.

**Table 5**

	Aluminium	Copper	Silver
Electrical conductivity in arbitrary units	37.7	59.6	63.0
Density in g/cm <sup>3</sup>	2.7	9.0	10.5
Cost of metal per kg in £	1.50	7.00	640.00



0 6 . 3

Electrical wires are usually made of pure metals and **not** alloys. This is because pure metals are better electrical conductors.

Suggest why alloys do **not** conduct electricity as well as pure metals.

Answer in terms of structure and bonding.

[2 marks]

---

---

---

---

9

**0 7**

This question is about electrolysis.

Aluminium is manufactured by electrolysis of a molten mixture of aluminium oxide ( $\text{Al}_2\text{O}_3$ ) and cryolite ( $\text{Na}_3\text{AlF}_6$ ).

**0 7 . 1**

Complete the half equation for the reaction occurring at the negative electrode.

**[1 mark]****0 7 . 2**Cryolite contains  $\text{Na}^+$  ions as well as  $\text{Al}^{3+}$  ions.Suggest **one** reason why sodium is **not** a product of the electrolysis.**[1 mark]**

---

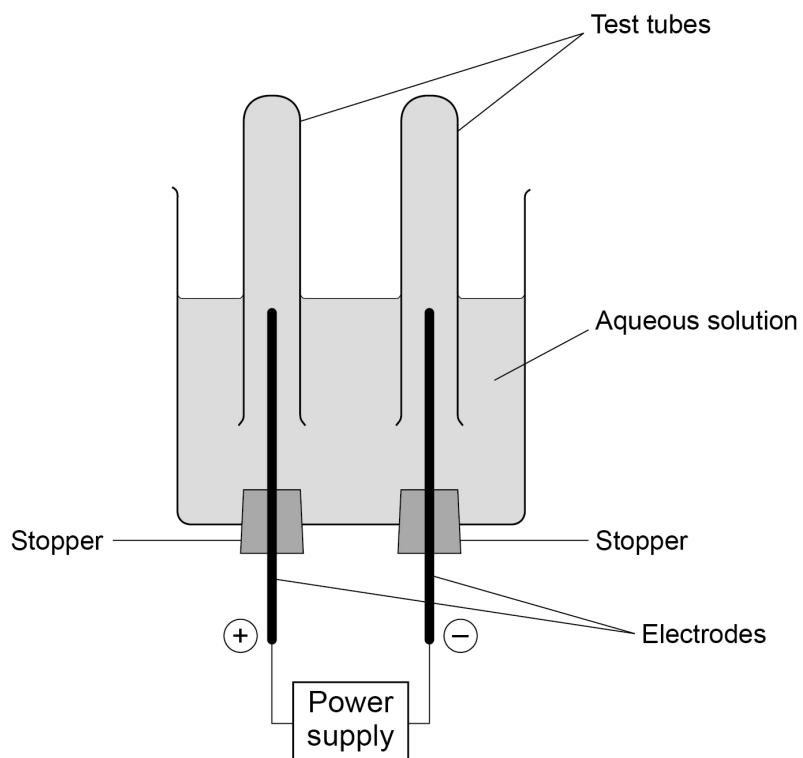
---

**Question 7 continues on the next page**

A student investigated the electrolysis of an aqueous solution of a different compound.

**Figure 7** shows the apparatus.

**Figure 7**



Hydrogen was produced at the negative electrode and oxygen was produced at the positive electrode.

**0 7 . 3** Explain how oxygen was produced from water during the electrolysis of this aqueous solution.

**[4 marks]**

---



---



---



---



---



---



---



---

**0 7 . 4** The student compared the volumes of the two gases collected.

How can the student change the apparatus in **Figure 7** to compare the volumes of the two gases produced more accurately?

Give **one** reason for your answer.

**[2 marks]**

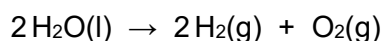
Change \_\_\_\_\_

---

Reason \_\_\_\_\_

---

**0 7 . 5** The overall equation for the reaction is:



What is the volume of oxygen produced when 20 cm<sup>3</sup> of hydrogen has been produced?

**[1 mark]**

Tick (✓) **one** box.

10 cm<sup>3</sup>

20 cm<sup>3</sup>

30 cm<sup>3</sup>

40 cm<sup>3</sup>

9
---

Turn over ►

**0 8**

This question is about elements in the periodic table.

**0 8 . 1**

Argon has the atomic number 18

Explain why argon does **not** form compounds.

Answer in terms of electrons.

**[2 marks]**

---

---

---

---

**0 8 . 2**

Phosphorus (P) is the element below nitrogen in the periodic table.

Predict the formula of the compound formed between phosphorus and hydrogen.

**[1 mark]**

Formula = \_\_\_\_\_

**0 8 . 3**

Tellurium is the element with atomic number 52

Predict whether tellurium reacts with metals.

Explain your answer.

Answer in terms of the position of tellurium in the periodic table.

**[2 marks]**

---

---

---

---

Barium (Ba) is an element in Group 2 of the periodic table.

Barium reacts with hydrochloric acid.

0 8 . 4

Suggest **two** observations that could be made when barium reacts with hydrochloric acid.

[2 marks]

1 \_\_\_\_\_

\_\_\_\_\_

2 \_\_\_\_\_

\_\_\_\_\_

0 8 . 5

Write a balanced symbol equation for the reaction between barium and hydrochloric acid.

[3 marks]

\_\_\_\_\_ + \_\_\_\_\_ → \_\_\_\_\_ + \_\_\_\_\_

10

**Turn over for the next question**

**Turn over ►**

**There are no questions printed on this page**

*Do not write  
outside the  
box*

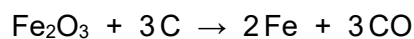
**DO NOT WRITE ON THIS PAGE  
ANSWER IN THE SPACES PROVIDED**

0 9

This question is about displacement reactions.

Iron is extracted from iron oxide by a displacement reaction with carbon.

The equation for the reaction is:



0 9 . 1

Which substance in the equation is reduced?

Give **one** reason for your answer.

Answer in terms of oxygen.

[2 marks]

Substance reduced \_\_\_\_\_

Reason \_\_\_\_\_

0 9 . 2

Which expression shows how to calculate the mass of carbon needed to produce 1 mole of iron from iron oxide?

Relative atomic mass ( $A_r$ ): C = 12

[1 mark]

Tick (✓) **one** box.

$\frac{1}{3} \times 12 \text{ g}$

$\frac{3}{2} \times 12 \text{ g}$

$1 \times 12 \text{ g}$

$3 \times 12 \text{ g}$

Question 9 continues on the next page

Turn over ►

A student investigated displacement reactions of four different metals represented by **A**, **B**, **C** and **D**.

**A**, **B**, **C** and **D** are **not** the actual chemical symbols for the metals.

The student:

- added each metal to aqueous solutions of the metal nitrates
- observed whether a reaction took place.

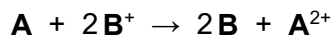
**Table 6** shows information about three of the reaction mixtures.

**Table 6**

Reaction	Metal	Metal nitrate solution	Equation
1	<b>A</b>	<b>BNO<sub>3</sub></b>	<b>A + 2BNO<sub>3</sub> → 2B + A(NO<sub>3</sub>)<sub>2</sub></b>
2	<b>C</b>	<b>A(NO<sub>3</sub>)<sub>2</sub></b>	<b>2C + 3A(NO<sub>3</sub>)<sub>2</sub> → 3A + 2C(NO<sub>3</sub>)<sub>3</sub></b>
3	<b>C</b>	<b>D(NO<sub>3</sub>)<sub>2</sub></b>	no reaction

0 9 . 3

The ionic equation for **Reaction 1** is:



Why is this a redox reaction?

[1 mark]

Tick (✓) **one** box.

**A** gains electrons and **B<sup>+</sup>** loses electrons.

**A** loses electrons and **B<sup>+</sup>** gains electrons.

Both **A** and **B<sup>+</sup>** gain electrons.

Both **A** and **B<sup>+</sup>** lose electrons.

**0 9 . 4** Which of the four metals has the greatest tendency to form positive ions?

Use **Table 6**.

**[1 mark]**

Tick (✓) **one** box.

**A**

**B**

**C**

**D**

**0 9 . 5** The nitrate ion has the formula  $\text{NO}_3^-$

Which of the four metals could be aluminium?

Explain your answer.

Use **Table 6**.

**[3 marks]**

Metal \_\_\_\_\_

Explanation \_\_\_\_\_

\_\_\_\_\_

\_\_\_\_\_

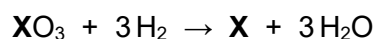
\_\_\_\_\_

**Question 9 continues on the next page**

0 9 . 6

Metal **X** is extracted from an oxide of metal **X** by reaction with hydrogen.

The equation for the reaction is:



The percentage atom economy for obtaining metal **X** by this method is 77.3%.

Calculate the relative atomic mass ( $A_r$ ) of metal **X**.

Relative atomic masses ( $A_r$ ): H = 1 O = 16

[4 marks]

---

---

---

---

---

---

---

---

---

---

Relative atomic mass ( $A_r$ ) = \_\_\_\_\_

12

1	0
---	---

This question is about titanium dioxide ( $\text{TiO}_2$ ).

1	0
---	---

1
---

Self-cleaning windows are coated with a layer of nanoparticles of titanium dioxide.

Titanium dioxide:

- helps sunlight break down dirt particles
- attracts water, so dirt is washed away by rain.

Nanoparticles of titanium dioxide are used instead of fine particles of titanium dioxide for coating self-cleaning windows.

Suggest **two** reasons why.

**[2 marks]**

1 \_\_\_\_\_

\_\_\_\_\_

2 \_\_\_\_\_

\_\_\_\_\_

**Question 10 continues on the next page**

**Turn over ►**



**There are no questions printed on this page**

*Do not write  
outside the  
box*

**DO NOT WRITE ON THIS PAGE  
ANSWER IN THE SPACES PROVIDED**





