

United Curriculum

End-of-Year Assessment 2023-24

Geography

Time: 1 hour

Year 7

Paper 1 – End-of-Year Assessment

Student surname:

Student first name(s):

Class name / number:

You must have: A pen, pencil, ruler and calculator would be useful.

Instructions

- Fill in the boxes on the front page.
- Use a black ink pen.
- The marks for each question are shown.
- Answer the questions in the space provided.
- Cross through any work you do not want to be marked.

Advice

- Read each question carefully before you begin.
- Try your best to answer every question. If you have time, go back and review your answers.

For Teacher use only:

Section A		Section B		TOTAL MARKS	
	28		28		56

Section A: Rivers

Question 1 (4 marks)

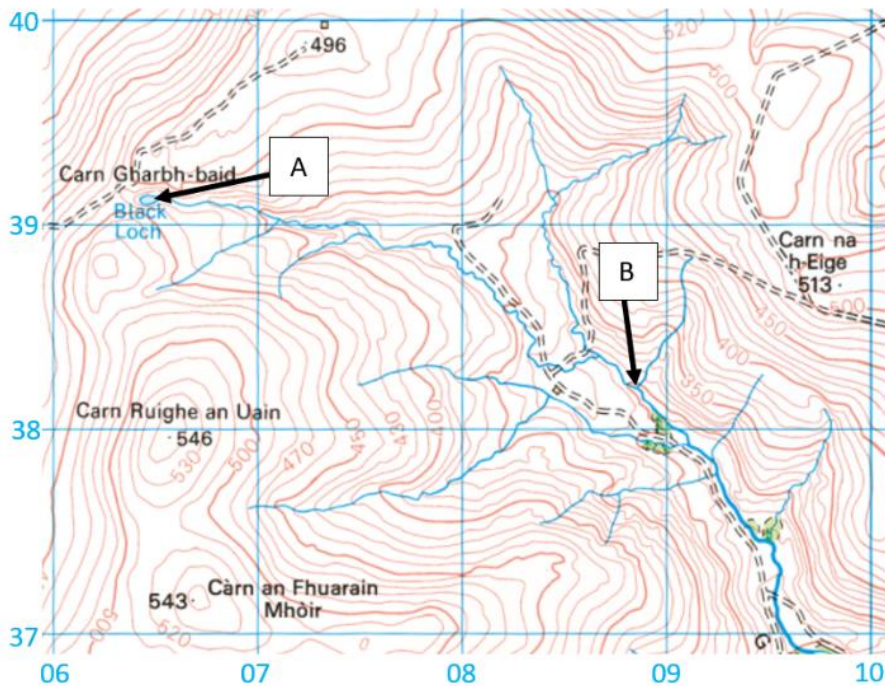


Figure A: An OS map of an upland landscape in Scotland.

1a. Use Figure A to identify the river feature labelled 'A' and tick the correct term in the table below.

River feature	Tick (✓)
Watershed	
Confluence	
Source	
Mouth	

	1
--	---

1b. Use Figure A to give the four-figure grid reference of the confluence labelled at point B.

.....

	1
--	---

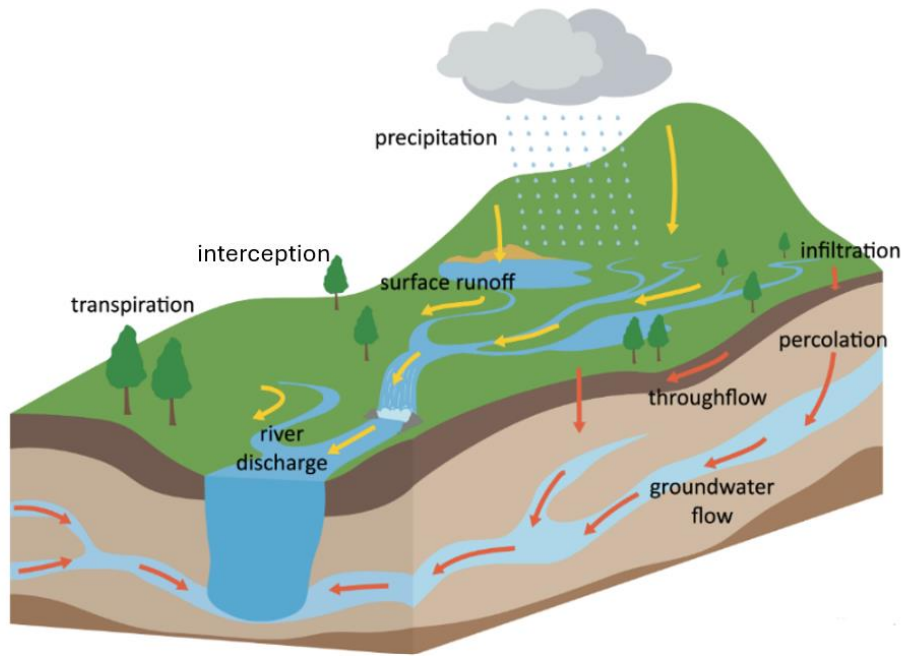


Figure B: A diagram of a drainage basin system.

1c. Use **Figure B** to **identify** the correct definition of infiltration.
Tick the correct definition.

Definition	Tick (✓)
The movement of water over the surface of the land back into a river.	<input type="checkbox"/>
The movement of water through the soil back into the river.	<input type="checkbox"/>
Water stored on the surface in lakes or puddles.	<input type="checkbox"/>
The movement of water from the surface into the soil.	<input type="checkbox"/>

	1
--	---

1d. Use **Figure B** or your own knowledge to **identify** one **store** of water in a drainage basin system.

.....

	1
--	---

Question 2 (9 marks)

2a. Attrition is a type of erosion which takes place within a river. **Identify** the correct definition for **attrition**.

Tick the correct definition.

Definition	Tick (✓)
The sheer force of the river causing the bed and banks to erode.	
Material carried by the river erodes by scraping along the bed and banks.	
Eroded material carried by the river hits into each other, breaking down into smaller pieces.	

	1
--	---

2b. **Define** the term **deposition**.

.....

.....

.....

.....

.....

	1
--	---



Figure C: The landscape at Carding Mill, Shropshire.

2c. Use **Figure C** to **describe** the features of the upper course of a river.

.....

.....

.....

.....

.....

	2
--	---



Figure D: A photograph of the middle course of the Vltava River in the Czech Republic.

2d. **Identify** the feature in the box labelled X in **Figure D**.

.....

	1
--	---

2e. **Explain** the formation of river meanders. You may use a diagram.

.....

.....

.....

.....

.....

.....

	4
--	---

Question 3 (6 marks)

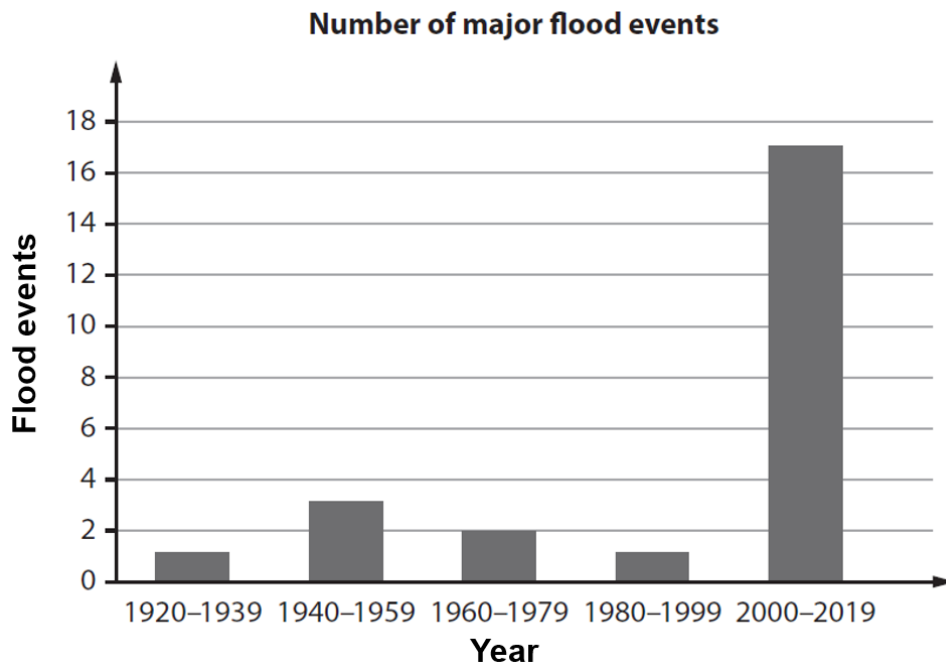


Figure E: The number of major flood events in the UK from 1920 to 2019.

3a. Use **Figure E** to **describe** the changes in the UK flood events between 1920 and 2019.

.....

.....

.....

.....

.....

	2
--	---



Figure F: Factors which could increase flood risk.

3b. Use **Figure F** and your own understanding to **explain** two factors which can increase flood risk.

.....

.....

.....

.....

.....

.....

.....

.....

.....

	4
--	---

Section B: World Development

Question 1 (3 marks)

Key: Percentage (%) of population not using the internet

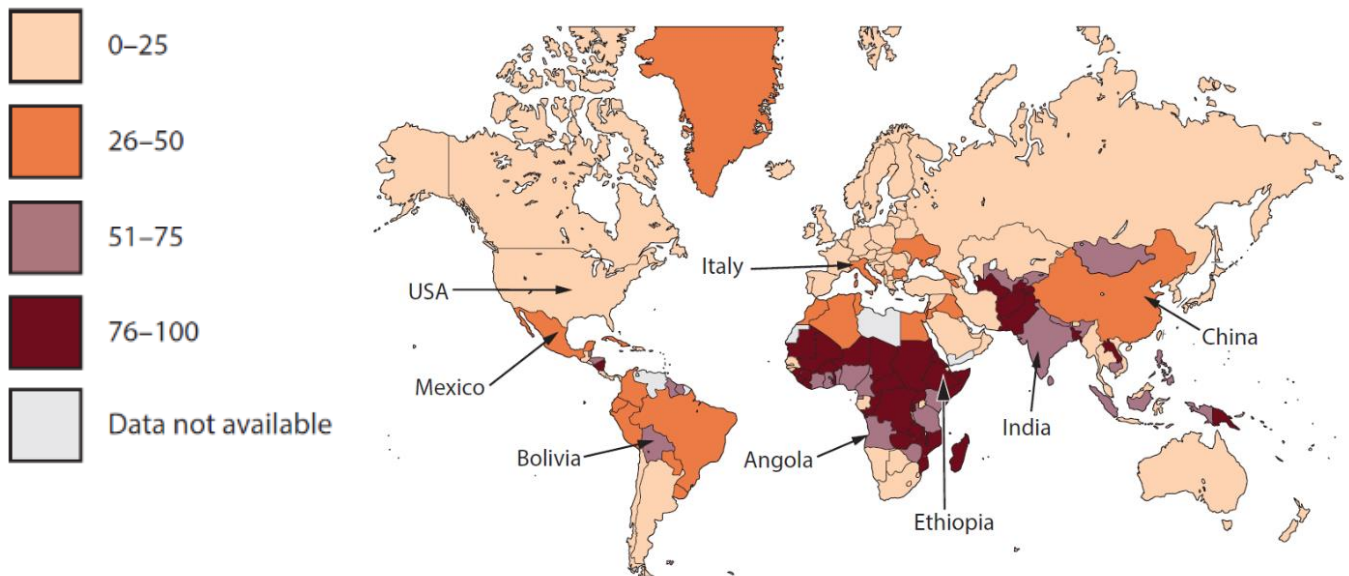


Figure G: A world map showing the percentage of people **not** using the internet in 2019. (Source: Edexcel IGCSE)

The table below contains five statements about Figure G.

Only **three** are correct. Tick the **three** correct statements.

Statement	Tick (✓)
Between 26-50% of the population of the USA were not using the internet in 2019.	
Between 76-100% of the population of Ethiopia were not using the internet in 2019.	
In 2019 Europe had the most countries with the highest percentage of the population not using the internet.	
In 2019 Africa had the most countries with the highest percentage of people not using the internet.	
Between 0-25% of the population of the UK were not using the internet in 2019.	

	3
--	---

Question 2 (7 marks)

Country	GDP per capita (US\$)	Life expectancy (years)
Belarus	7,302	74.8
Hungary	18,728	76.9
Italy	35,657	83.5
Romania	14,858	76.1
Singapore	72,794	83.6
Switzerland	91,991	83.8

Figure H: Information about Gross Domestic Product (GDP) per capita (US\$) and life expectancy for selected countries. (Source: Edexcel A)

2a. **Identify** the country with the highest **life expectancy** from **Figure H**.

.....

	1
--	---

2b. Use **Figure H** to **describe** the relationship between GDP per capita (US\$) and life expectancy.

.....

.....

.....

	2
--	---

2c. Describe two other indicators used to measure development.

Method 1:

.....

.....

.....

Method 2:

.....

.....

.....

	4
--	---

Question 3 (9 marks)

3a. Explain two factors which can affect the development of a country.

.....

.....

.....

.....

.....

.....

.....

.....

.....

.....

	4
--	---

Asha is a charity which aims to work with the urban poor to bring improvements to their quality of life.

Around 700 000 people in Delhi have benefited from Asha's work.

The charity receives money from several sources, including Indian, British and Australian governments, some UK schools, international banks, and other charities.

Asha gives access to banks for the poorer residents of Delhi. They can open accounts with no money and can benefit from loans. Some people have taken out loans to start businesses and improve their homes.

Asha has created community centres which have computers with broadband. Children can complete basic computer courses at the centres, as well as reading and writing courses.

Figure J: Information about Asha, an aid project in Delhi, a city in India.

3b. Use **Figure J** to **identify** one source of Asha's funding.

.....

	1
--	---

3c. Use **Figure J** to **explain** one advantage of Asha's work in Delhi.

.....

.....

.....

	2
--	---

3d. **Explain** one possible disadvantage of aid.

.....

.....

.....

	2
--	---

This is the end of the assessment.
There are no questions printed on this page.

COPYRIGHT NOTICE:

Certain elements of this assessment may contain materials owned by third parties. Every effort has been made to obtain necessary permissions and acknowledgments for such content. If you believe your rights have been infringed or if you have any questions regarding the use of third-party materials, please contact curriculumsupport@unitedlearning.org.uk.
©2024 United Learning. All rights reserved.